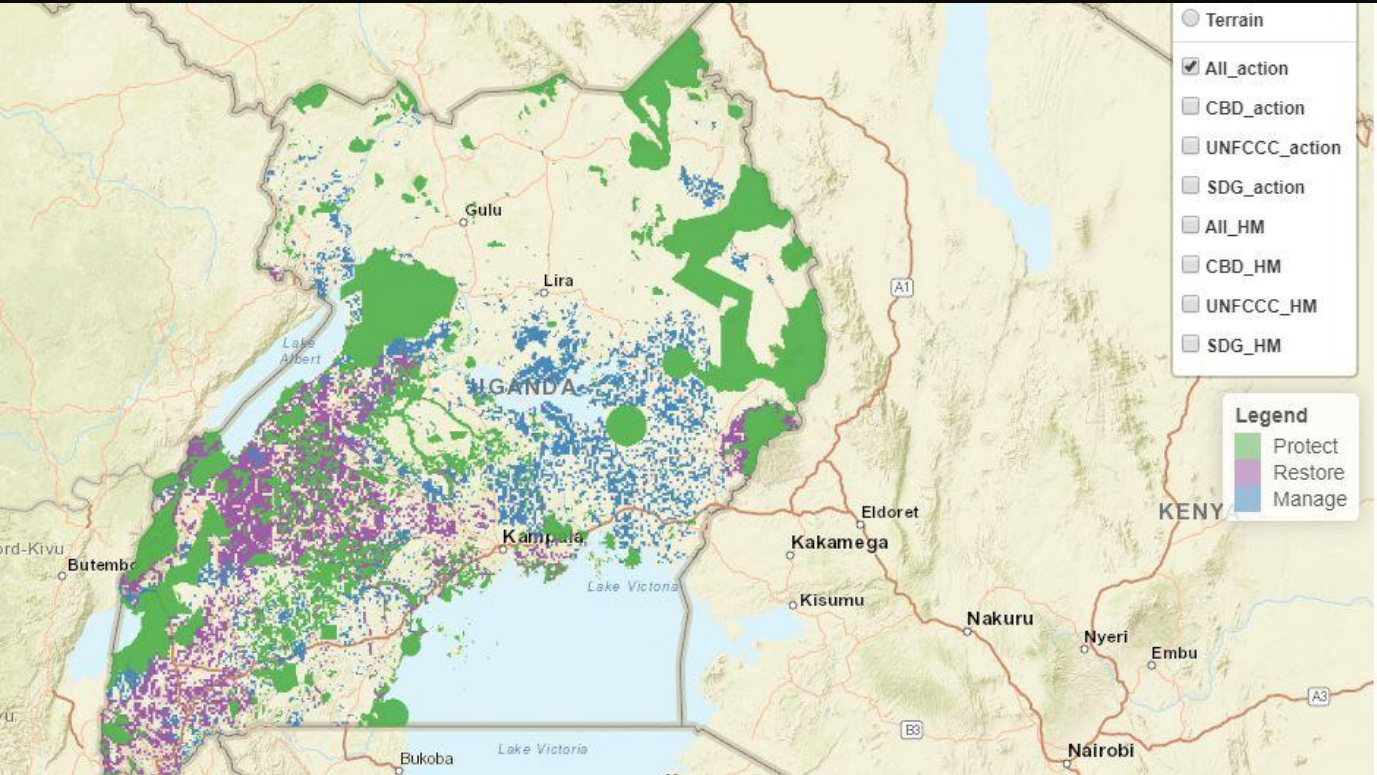


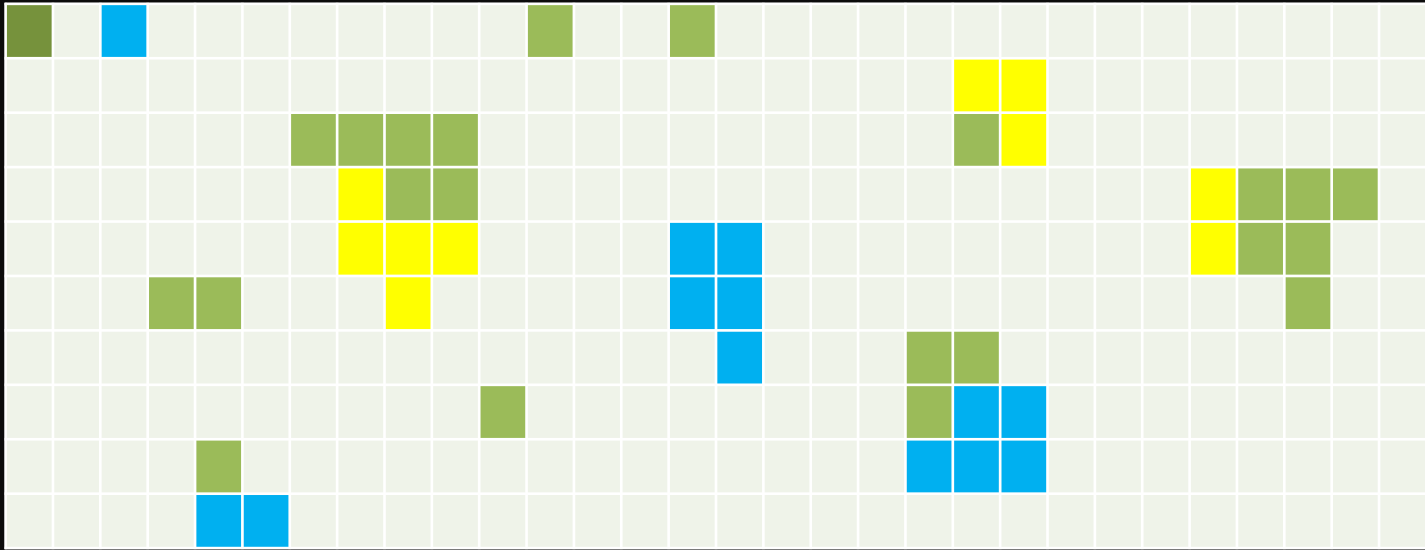
Identifying Essential Life Support Areas which if protected, managed and restored will support nature-based commitments to biodiversity, climate change and human well-being

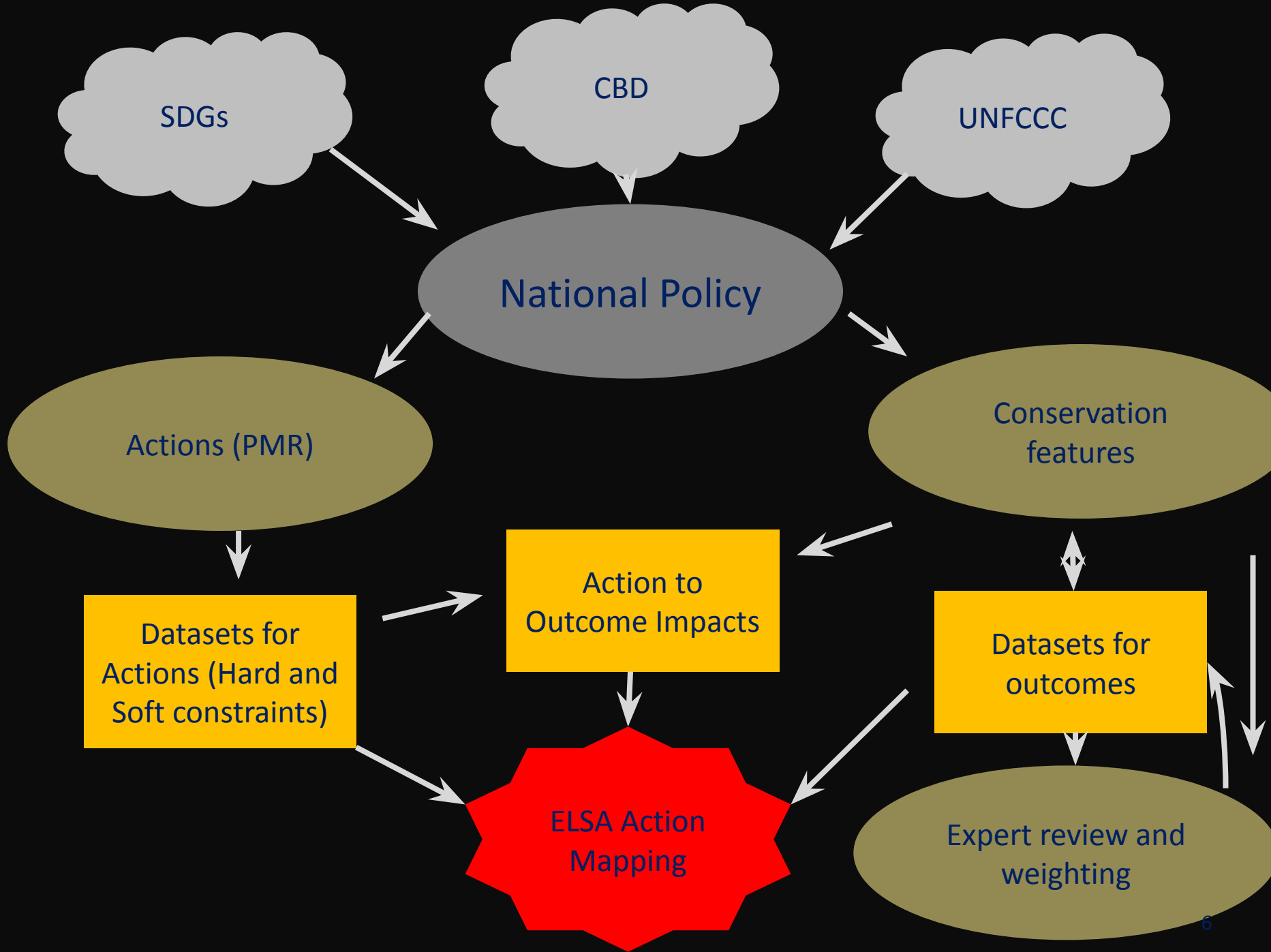


Design criteria

1. Directly support national policy commitments (CBD, UNFCCC, SDGs)
2. Include actions to Protect, Manage and Restore lands and ecosystems
3. Harness national expert opinion and stakeholder values
4. Use the tools and concepts of Systematic Conservation Planning
5. Spatially explicit, national level
6. Include hard constraints on landbase
7. Use national datasets where available, and global datasets where suitable
8. Be flexible, allowing exploration of how results change under different scenarios before producing final ELSA maps

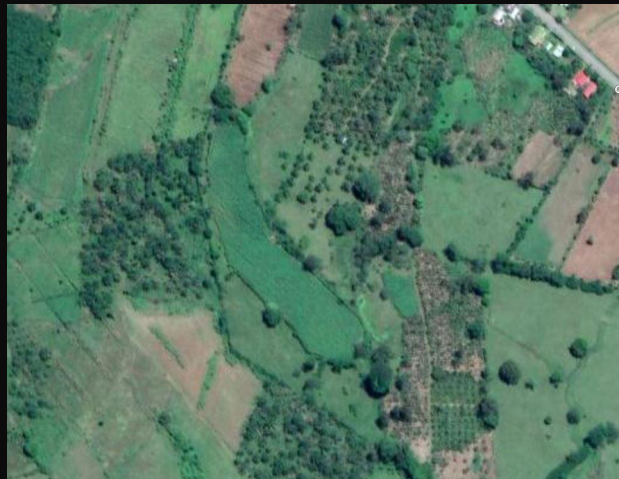
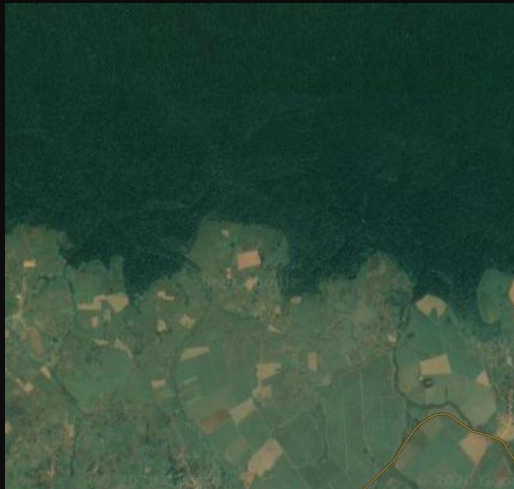
Planning for multiple actions





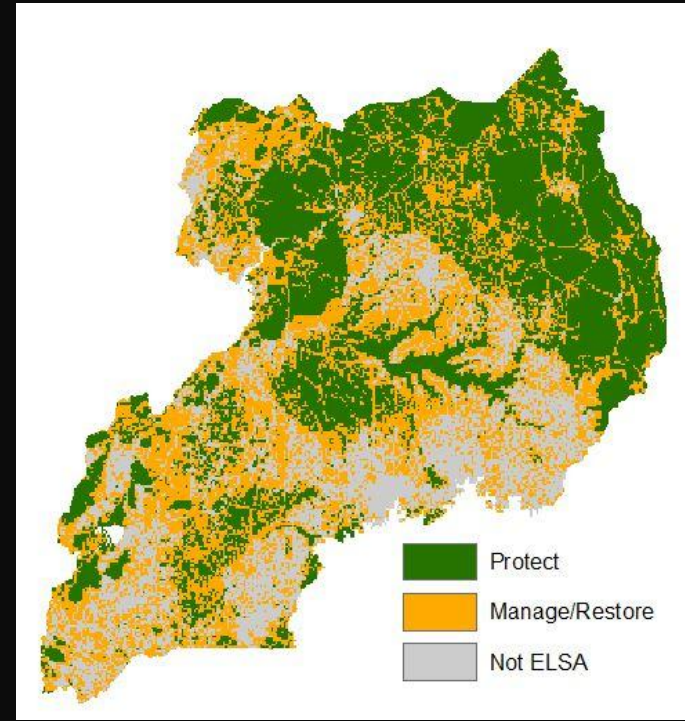
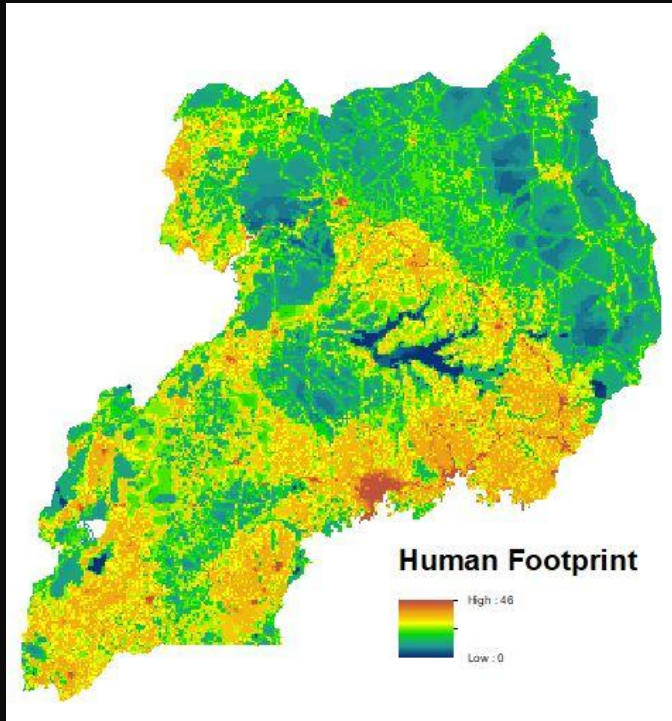
ELSA problem formulation
Binary vs Multi Action

Protect - *Manage* - *Restore*



Protect - Manage – Restore:

Where?



Human Footprint