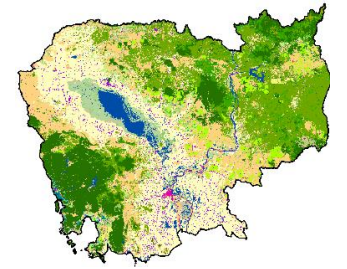




How can this project Contribute to
Strategic priorities of DGIS/MoE



Cambodia Environment Management
Information System (CEMIS) and
ELSAs

Department of Geographic Information Service (DGIS)

VISION

The Department of Geospatial Information Service (DGIS) plays an important role in the management and operation of a central portal at the Ministry of Environment providing a reliable environmental geospatial data and information basis for decision-making processes and high-quality data services to practitioners and decision-makers in Cambodia, fostering environmental protection, natural resources management, biodiversity conservation and sustainable development.

MISSION

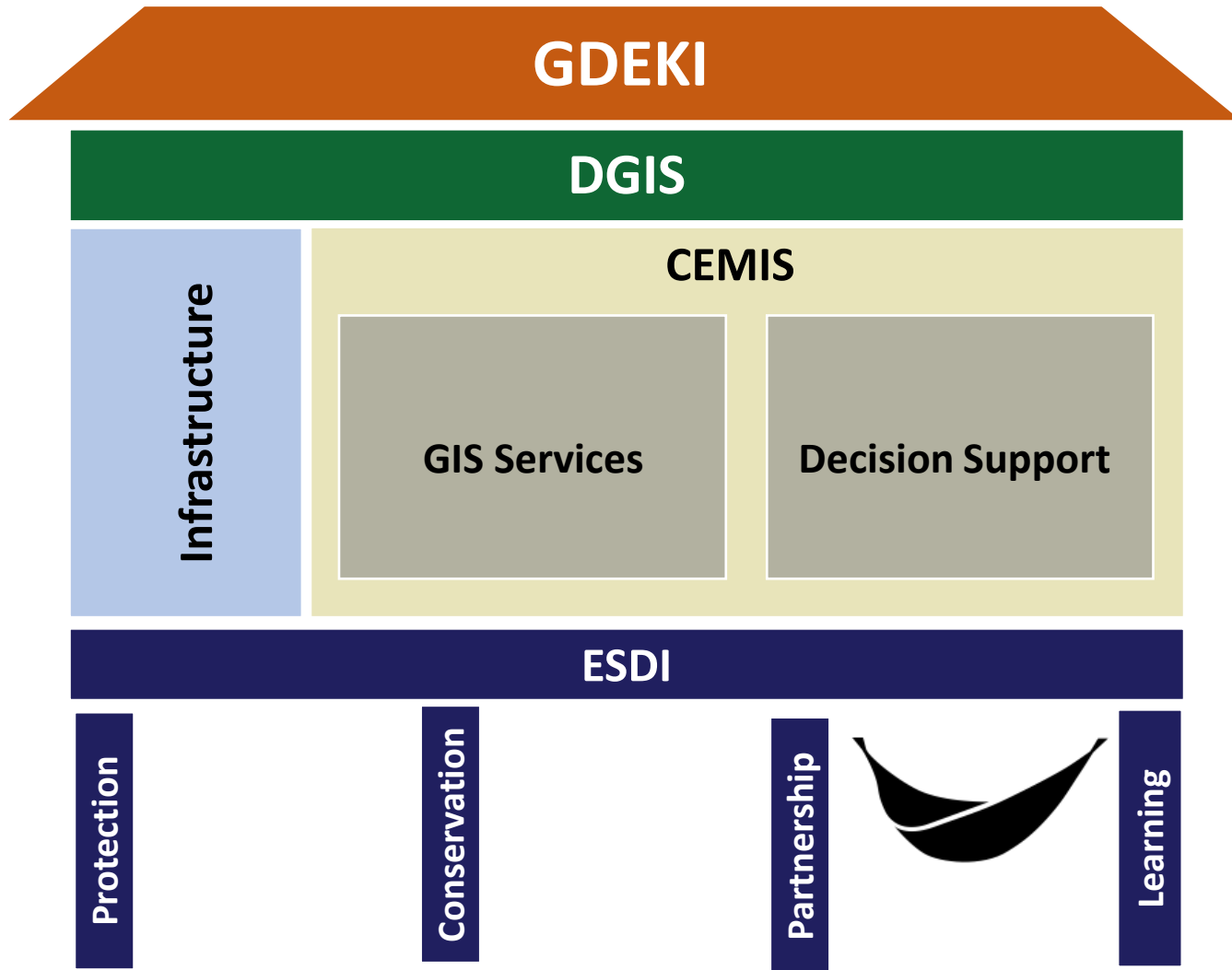
The Department of Geospatial Information Service (DGIS) of the MoE will establish a well-functioning and sustainable Central Data Portal through building the internal and external human capacity, in-house technology, and standards and procedures.



Cambodia Environment Management Information System (CEMIS) ?

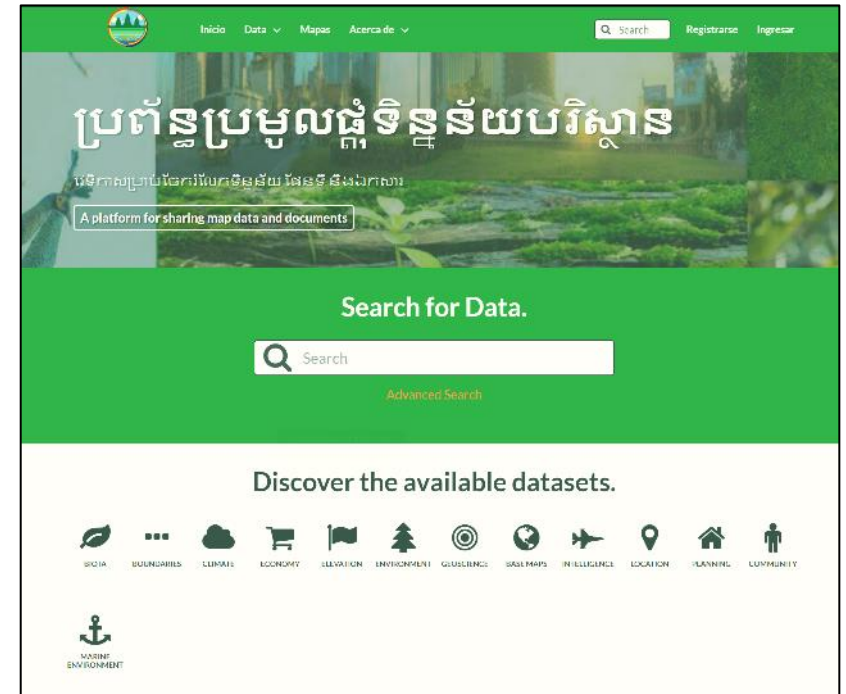
- ❖ The Ministry of Environment is developing the **Cambodia Environment Management Information System (CEMIS)** which will provide a central spatial data platform for managing and distributing environmental information. MoE is seeking broad participation from external partners collecting site specific data throughout Cambodia's environmental network.
- ❖ CEMIS aims to automate and simplify the management (collection, analysis, updated and sharing) of spatial information to:
 - Support the monitoring and analysis of targets and indicators of environmental polices.
 - Facilitate strategic information for decision-makers and partners.





GDEKI-DGIS

A key CEMIS data access point will be a geoportal



Web-GIS Geoportal



Department of Geographic Information Service (DGIS)

Physical Infrastructure

Large Format Printers	Field Equipment
Large Format Printers	Tablets, Phones
Cloud Servers	Laptop Computers
Desktop Computers	Local Servers

Cambodia Environment Management Information System (CEMIS)

A Management Information System (MIS) ensures that data, analyses, and services necessary to support institutional objectives are readily available and are of high quality.

The Cambodia Environment Management Information System (CEMIS) supports the broad scope of MoE responsibilities as well as serving other ministries, Cambodian citizens, and foreign partners. CEMIS has two key components:

- **GIS Services**
- **Decision Support Services**

Environmental Spatial Data Infrastructure (ESDI)



Department of Geographic Information Services (DGIS)

Physical Infrastructure

Large Format Printers	Field Equipment
Large Format Printers	Tablets, Phones
Cloud Servers	Laptop Computers
Desktop Computers	Local Servers

Cambodia Environment Management Information System (CEMIS)

GIS Services

Geospatial Data Portal

Mapping Services

Geostatistics and Analytics

Field Mapping

Decision Support Systems

National Forest Monitoring System (NFMS)

Natural Resources Management System

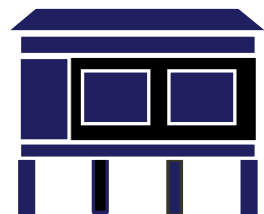
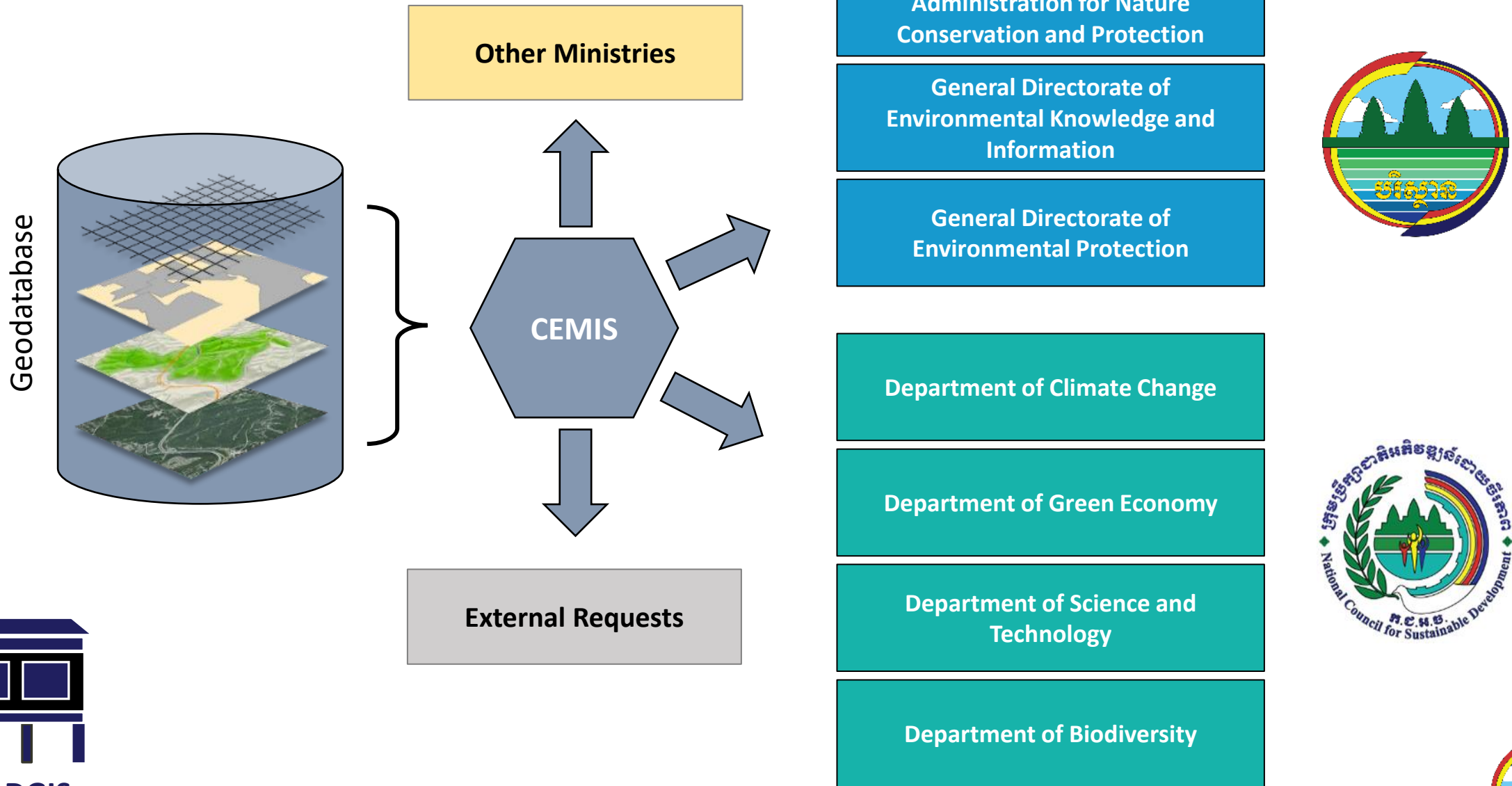
Reporting Systems (GHG Inventories, etc)

Conservation Area Monitoring Platform (CAMP)

Environmental Spatial Data Infrastructure (ESDI)



Central Data Portal



GDEKI-DGIS

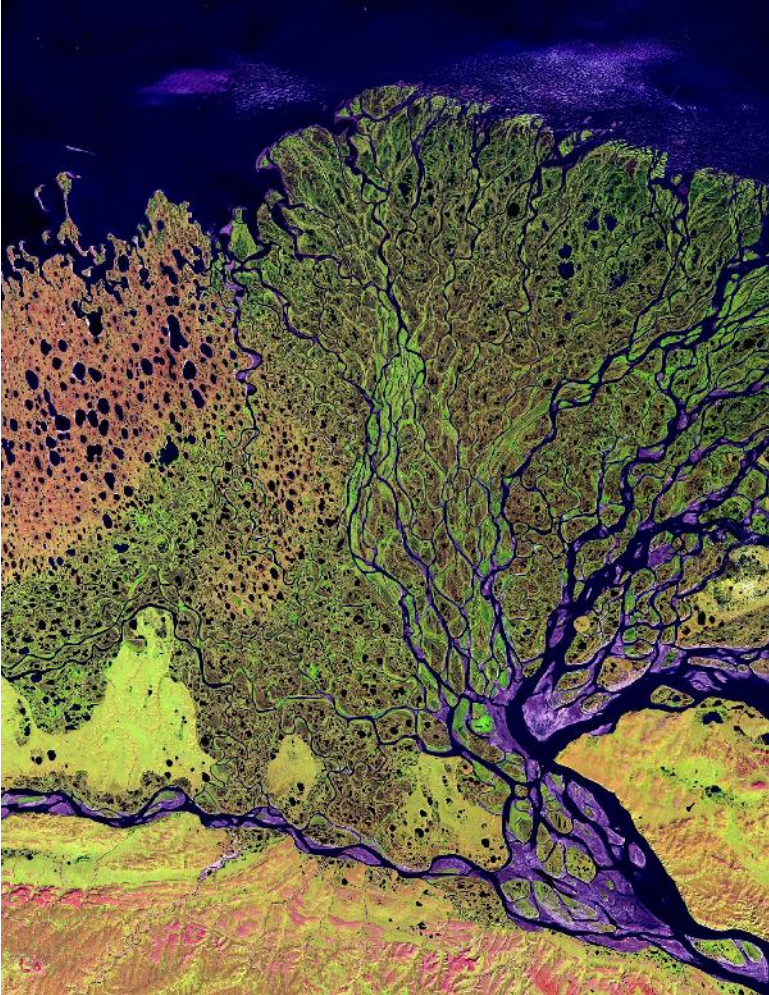


Why DGIS is joining with UNDP Nature for Development to map ELSAs

- The UNDP Nature for Development program is developing methods to map Essential Life Support Areas (ELSAs) or regions where protecting, sustainably managing, and restoring nature will help countries make the biggest gains toward achieving their nature-based goals
- ELSA maps locate regions that together conserve critical biodiversity and provide humans with essential ecosystem services, such as carbon storage, food, fresh water, water filtration, and disaster risk reduction
- These maps can serve as a decision support tool to help decision makers take action to meet their goals around nature, climate, and sustainable development



CEMIS & ELSA



The ELSA project could help DGIS build the general framework for the development of CEMIS through:

- Identifying existing policies where CEMIS is has a major contribution.
- Liaising internal and external partners and stakeholders of the MoE for a common objective → Data management
- Listing and analyzing existing data to optimize the geo-spatial analysis.
- Exploring ways to share data with partners and final users.



**Thank you
For
Kind attention ...!!!**

